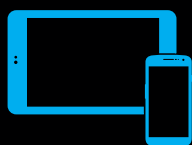


SUMMIT

INTELLIGENT CLOUD CONNECTED VIDEO SECURITY PLATFORM



View footage from anywhere with the free remote viewing apps for your smartphone or tablet



Securely save and share video clips via the cloud



View live HD video on your Apple TV



Multibrowser support for Windows and Mac with no software to install



Surveillance-rated hard drives for long life and dependability



Pain-free single cable camera installation reduces installation labor



Receive new features and functionality via cloud and software updates



Remotely manage users and settings online from virtually anywhere



SUMMIT

INTELLIGENT CLOUD CONNECTED VIDEO SECURITY PLATFORM

Recorder Specifications

Model Number	Summit 800	Summit 1600
PoE Network Camera Ports	8	16
Total Number of IP Channels*	24*	
Recording Rate	100Mbps	
Video Outputs	1 HDMI, 1 DisplayPort	
Motion Detection	Server Side (Adjustable Sensitivity, Custom Grid)	
Remote Operation	Complete Remote Operation (Live view, Search, Setup, Updates)	
Remote Software	AvertX Connect / Mobile Apps	
Remote Device Apps	Free AvertX apps for Apple TV iPhone, iPad, Android Smartphones and Tablets	
Remote Access Browser Support	Chrome, Safari, Firefox, Edge and IE on Windows and Mac OSX	
Remote Device Connection	AvertX Connect	
PTZ Control	IP Protocol	
Recording Mode	Continuous, Motion, Continuous + Motion	
Playback Search	Multi-Channel playback / Calendar / Timeline / Thumbnail / Event	
Backup	Cloud / Network / USB	
USB Ports	Front: 2 x USB 2.0 Rear: 2 x USB 3.0	
External USB Hard Drive	Backup only; not supported for video recording	
Operating System	Embedded Linux	
Storage Capacity (Size)	Up to 12TB with Factory Upgrade	Up to 24TB with Factory Upgrade
SSD OS Drive	Standard	
Power Supply	180W	200W
Power Rating	Input: AC 100~240V, 2.5A, 50-60Hz	Input: AC 100~240V, 3.5-2.5A, 50-60Hz
Max Power Consumption	135W	200W
PoE Switch Load	100W	140W
Max Operating Temperature	104°F (40°C)	
Rack Mount	Rack Ears Included	
Keyboard & Mouse	Included	
Supported IP Cameras	AvertX and ONVIF Profile S Cameras**	
Country of Origin	Taiwan	
NDAA Compliant	Yes	
Dimensions	8.7" W x 10.8" L x 1.7" H (366 x 316 x 44mm)	11.8" W x 11" L x 1.7" H (300 x 279 x 44mm)
Unit Weight	3.5lbs	5lbs.
Warranty	2 Year	
Support	Free AvertX Pro Team Support for Life	
Certification	UL, CE, FCC	



1-855-2AVERTX
(1-855-228-3789)

www.avertx.com

37724AD

Copyright ©2022 AvertX. All rights reserved. Information contained in this document is subject to change without prior notice. AvertX does its best to provide accurate information, but cannot be held responsible for typos or mistakes.

*Requires External Power Over Ethernet Switch, Not Included.

**Plug and Play and full functionality only available with AvertX Cameras.