

INTELLIGENT CLOUD-CONNECTED VIDEO PLATFORM QUICK START GUIDE

Getting Started

1. Connect a monitor to your recorder using the included HDMI cable.
2. Connect the included mouse and keyboard to the USB ports on the front or back of the recorder.
3. Connect the recorder to the internet using the provided ethernet cable.
4. Connect the cameras to onboard PoE ports, or to an external switch connected to the Camera Network Port.
5. Connect the included power cord to the recorder and plug the other end into a standard household outlet.

Next Steps

6. Power on and log in to the recorder using the default credentials.

Default Credentials

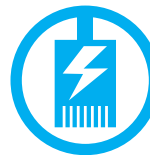
Username: admin

Password: 1234

7. Follow the First Time Wizard to complete basic setup of your recorder.
8. Use the QR Code or website below to continue with setup: <https://www.avertx.com/new-system-setup/>



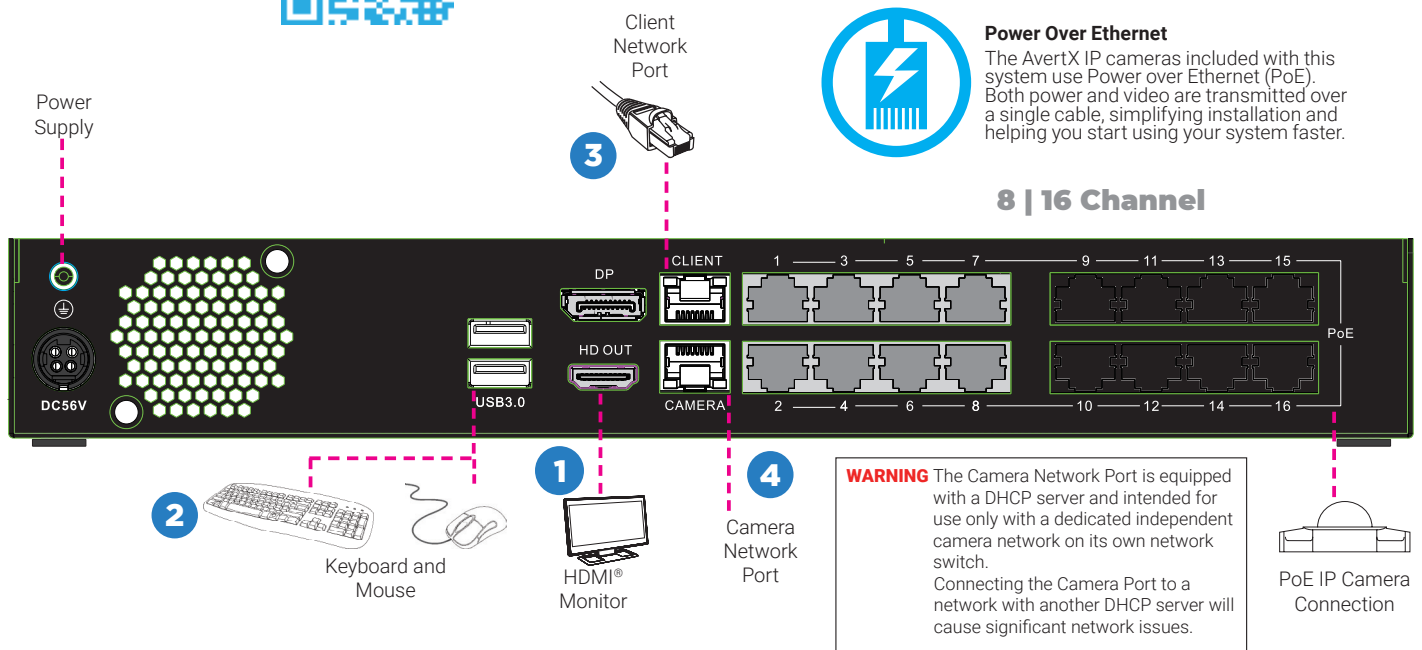
Scan the QR code to visit our system setup page for resources to complete installation.



Power Over Ethernet

The AvertX IP cameras included with this system use Power over Ethernet (PoE). Both power and video are transmitted over a single cable, simplifying installation and helping you start using your system faster.

8 | 16 Channel



Network Settings

Remote Communication Port	80 (8888 used if 80 is blocked)	Camera Network Port / Internal PoE Switch	192.168.51.1 / 255.255.255.0 (Gateway and DNS blank)
Client NIC IP Address	DHCP		

Contact Our Pro Team

Phone: 855-228-3789

Email: support@avertx.com

Chat: <https://help.avertx.com/>