

HD448IR QUICK START GUIDE

ABOUT THIS GUIDE

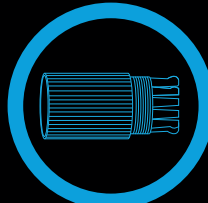
This guide is a quick reference for users to install and operate the HD448IR Night Vision HD Indoor/Outdoor Bullet Cameras. It provides only basic information regarding installation and operation of your camera. For further details, please download the HD448IR User Manual at www.avertx.com.

CONTENTS OF CAMERA BOX

Before proceeding, please check to confirm that the box contains the items listed here. Do not install or operate the product if any item is missing or has defects; contact AvertX for assistance.



HD448IR Bullet



Waterproof Cable Connector



Screws



Anchors

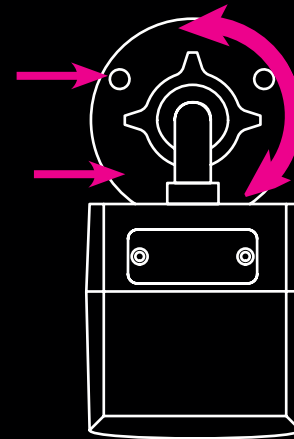


Documents

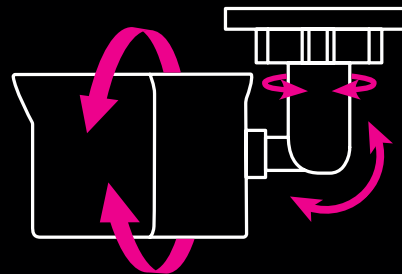
Mounting accessories for this camera are available at avertx.com.

INSTALLATION

Align Holes



Adjust View



The HD448IR camera can be installed directly onto a wall or ceiling. Be sure that the structure is strong enough to support the camera.

1. Use the included mounting template to pre-drill holes for the mounting screws and, if passing the cable through the ceiling or wall, drill a 7/8" hole.
2. Thread your Cat5e camera cable through the waterproof cable connector and connect to the camera dongle. See reverse page for instructions on waterproof cable connector.
3. Loosen the locknut on the camera bracket. Aim the camera down to access screw holes
4. Attach the camera base to the ceiling or wall with the included screws. When mounting on an outdoor wall, the cable notch should be positioned downward.
5. Adjust the position of your camera. TIP: Use the AvertX Connect app to view the camera while adjusting view.
6. Tighten the locknut to secure your camera.

Note:

The HD448IR mini bullet camera is pre-focused and factory sealed. There is no need to open the camera housing.

If mounting outside, seal the opening at the wall and the base of the camera with silicone caulking.

Improper installation may cause damage to your camera and void the warranty.

NETWORK CABLE INSTALLATION

A 100' Cat5e non-plenum UTP camera cable is included with your camera. It is important to consider how the network cable is attached to the camera.

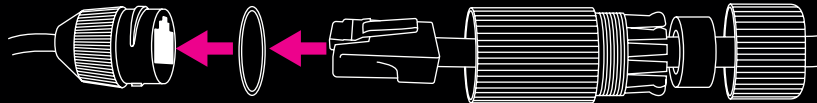
- If passing the cord through a wall or ceiling, drill a 7/8" hole.
- We recommend using the waterproof cable connector on all installations.
- For maximum weather and tamper resistance in outdoor installations, place the connection between your camera cable and the camera jack within a wall or use a junction box available at avertx.com.
- For outdoor installations, use silicone caulking to seal any holes in the wall or ceiling to protect against leaks.
- If your installation is in a commercial building, consult local fire codes. Plenum rated cable may be required.

WATERPROOF CABLE CONNECTOR

To use the IP66-rated waterproof cable connector:

You do not need to re-terminate the cable to use the waterproof cable connector.

- Slide all pieces of the waterproof cable connector over the cable plug in this order:
 1. Small plastic ring
 2. Flexible silicone seal ring. You will need to stretch the silicone seal over the RJ-45 plug.
 3. Large plastic ring



- Slide the rubber "O" ring over the camera plug screw and connect the camera cable to the plug on the dongle. Screw the large plastic ring into the dongle.
- Insert the flexible silicone seal into the "crown" section of the large plastic ring
- Screw the small plastic ring into the large plastic ring

Copyright © 2020 AvertX. All rights reserved. Information contained in this document is subject to change without prior notice. AvertX does its best to provide accurate information, but cannot be held responsible for typos or mistakes.

CONNECTING TO THE CAMERA

This camera is plug and play when connected to an AvertX ProConnect Recorder. To access this camera without an AvertX recorder, you will need to connect the camera to a Power Over Ethernet Switch and install AvertX Network Camera Manager Software on a Windows computer.

1. Download and install the Camera Finder software at www.avertx.com/downloads/.
2. When the camera is found, click "Load" under the web page. The camera admin page will load in a browser.
3. Login to the camera using the username **admin**. The first time the camera is accessed you will need to set a password.
4. AvertX cameras are set to DHCP by default. If a DHCP server is not detected after 2 minutes, the camera will default to IP address 192.168.51.2.

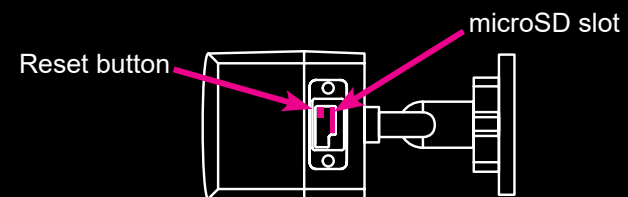
MICRO SD CARD AND RESET BUTTON

Your camera is equipped with a slot for a microSD card and a Reset button. To access these, you must remove the microSD / Reset cover.

If you have purchased a microSD card to be used for backup, insert the formatted card into the slot. Refer to the user manual for compatible cards and how to properly format your microSD Card.

Use the reset button to restore the factory default settings. To reset your camera:

1. Disconnect the cat5e cable from the camera for 30 seconds.
2. Hold the reset button down while reconnecting cat5e.
3. The IR lights will illuminate when power is reconnected; continue holding the reset button until the IR lights turn off (approximately 30 seconds).
4. Allow 2 minutes before attempting to rediscover camera.



FOR FURTHER INSTRUCTIONS:

For more information on installing your AvertX camera, download the user manual, read FAQs and DIY resources, and view instructional videos at www.avertx.com.

Contact AvertX Support: 1-855-228-3789 | www.avertx.com