

AVERTX

HD40IR

Night Vision HD Indoor/Outdoor IP
Dome Camera

User Manual



HD40IR: Night Vision HD Indoor/Outdoor IP Bullet Camera
Operations Manual

Manual Edition 32332AB – JULY 2014

©2014, AvertX
All Rights Reserved

No part of this document may be reproduced by any means, electronic or mechanical, for any purpose, except as expressed in the Software License Agreement. AVERTX shall not be liable for technical or editorial errors or omissions contained herein. The information in this document is subject to change without notice.

The information in this publication is provided “as is” without warranty of any kind. The entire risk arising out of the use of this information remains with recipient. In no event shall AVERTX be liable for any direct, consequential, incidental, special, punitive, or other damages whatsoever (including without limitation, damages for loss of business profits, business interruption or loss of business information), even if AVERTX has been advised of the possibility of such damages or whether in an action, contract or tort, including negligence.

This software and documentation are copyrighted. All other rights, including ownership of the software, are reserved to AvertX. AVERTX, and AvertX, are registered trademarks of AVERTX in the United States and elsewhere; Windows is a registered trademarks of Microsoft Corporation. All other brand and product names are trademarks or registered trademarks of the respective owners.

The following words and symbols mark special messages throughout this guide:

WARNING: Text set off in this manner indicates that failure to follow directions could result in bodily harm or loss of life.

CAUTION: Text set off in this manner indicates that failure to follow directions could result in damage to equipment or loss of information.

AVERTX

IMPORTANT SAFEGUARDS

1. **Read Instructions**

Read all of the safety and operating instructions before using the product.

2. **Retain Instructions**

Save these instructions for future reference.

3. **Attachments / Accessories**

Do not use attachments or accessories unless recommended by the appliance manufacturer as they may cause hazards, damage product and void warranty.

4. **Installation**

Do not place or mount this product in or on an unstable or improperly supported location. Improperly installed product may fall, causing serious injury to a child or adult, and damage to the product. Use only with a mounting device recommended by the manufacturer, or sold with the product. To insure proper mounting, follow the manufacturer's instructions and use only mounting accessories recommended by manufacturer.

5. **Power source**

This product should be operated only from the type of power source indicated on the marking label.

Precautions

Operating

- Before using, make sure power supply and others are properly connected.
- While operating, if any abnormal condition or malfunction is observed, stop using the camera immediately and then contact your local dealer.

Handling

- Do not disassemble or tamper with parts inside the camera.
- Do not drop or subject the camera to shock and vibration as this can damage camera.
- Do not block the cooling holes on the bracket. This camera has a cooling fan inside the housing. Blocking the cooling holes will cause heat to build up and cause malfunction.
- Care must be taken when you clean the clear dome cover. Scratches and dust will ruin the image quality of your camera. Do not use strong or abrasive detergents when cleaning the camera body. Use a dry cloth to clean the camera when it is dirty. In case the dirt is hard to remove, use a mild detergent and wipe the camera gently.

Installation and Storage

- Do not install the camera in areas of extreme temperatures in excess of the allowable range. (14°F ~ 122°F / -10°C ~ 50°C)
- Avoid installing in humid or dusty places. The relative humidity must be below 90%.
- Avoid installing in places where radiation is present.
- Avoid installing in places where there are strong magnetic fields and electric signals.
- Avoid installing in places where the camera would be subject to strong vibrations.
- Never face the camera toward the sun. Do not aim at bright objects. Whether the camera is in use or not, never aim it at the sun or other extremely bright objects. Otherwise the camera may be smeared and damaged.

REGULATION

This device complies with Part 15 of the FCC Rules. Operation is subject to the following two conditions: (1) this device may not cause harmful interference, and (2) this device must accept any interference received, including interference that may cause undesired operation.

This symbol on the product or on its packaging indicates that this product shall not be treated as household waste in accordance with Directive 2002/96/EC. Instead it shall be handed over to the applicable collection point for the recycling of electrical and electronic equipment. By proper waste handling of this product you ensure that it has no negative consequences for the environment and human health, which could otherwise be caused if this product is thrown into the garbage bin. The recycling of materials will help to conserve natural resources.

For more details information about recycling of this product, please contact your local city office, your household waste disposal service or the shop where you purchased the product.

Compliance is evidenced by written declaration from our suppliers, assuring that any potential trace contamination levels of restricted substances are below the maximum level set by EU Directive 2002/95/EC, or are exempted due to their application.

WARNING

DANGEROUS HIGH VOLTAGES ARE PRESENT INSIDE THE ENCLOSURE.

DO NOT OPEN THE CABINET.

REFER SERVICING TO QUALIFIED PERSONNEL ONLY.

CAUTION



TABLE OF CONTENTS

TABLE OF CONTENTS.....	5
INTRODUCTION.....	7
Overview	7
Camera Default Settings	7
Product Features.....	7
ONE: GETTING STARTED	8
Box Contents	9
Camera Overview.....	9
Dimensions.....	9
Side	9
Front.....	9
Connections	10
TWO: CAMERA FINDER.....	11
AvertX Camera Finder.....	12
Finding IP Cameras.....	12
Accessing the Camera	12
Changing the IP Address.....	12
THREE: SETUP AND CONFIGURATION	13
Installing the Camera.....	14
Ceiling and Wall Installation	14
Removing the Lens Cover.....	15
Installing the Desiccant.....	15
Resetting the Camera	15
MicroSD Card.....	15
Connecting to the Camera.....	16
Connecting In a Web Browser.....	16
Administrator/User Privileges	16
Default Username and Password.....	16
Connecting a Stream.....	16

Camera Settings.....	17
Viewer Tabs	17
Home.....	18
Language Change.....	Error! Bookmark not defined.
Using Digital Zoom Control	18
Setup.....	18
System	18
Streaming.....	20
Camera	21
Motion Detection	22
Software Upgrade	23
Logout	23
Logging In as a Different User.....	23
FOUR: SPECIFICATIONS.....	24
Camera Specifications.....	25

INTRODUCTION

OVERVIEW

The HD40IR Night Vision HD Indoor/Outdoor IP Bullet Cameras are compact cameras designed for easy setup and use. The 3 megapixel resolution provides high definition images. The HD40IR camera also offer quad streaming and can be used in a variety of installations including shops, stores, banks, factories and for building surveillance.

With Power over Ethernet (PoE), the need for separate power lines is eliminated and cabling and installation costs can be significantly reduced. The light weight, and small size of the camera make installation easy in a variety of locations.

The HD40IR includes Digital Wide Dynamic Range, 3D Noise Reduction, and Day/Night ICR, making it useful for challenging lighting conditions and nighttime installations.

Camera Default Settings

IP Address	192.168.0.250
Username	Admin
Password	1234
Management Port	80
Streaming Port (RTSP)	554

Product Features

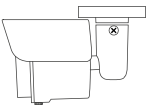



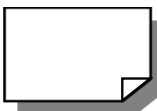

- Progressive Scan CMOS Sensor
- 1080p and 3MP Resolution Available
- H.264 Encoding
- Dual Streaming
- Multi-Language Support
- Tampering Alarm
- Digital Wide Dynamic Range
- Motion Detection
- Privacy Masks
- Smart Picture Quality / 3D Noise Reduction
- Network Failure Detection
- Digital Day/Night (ICR)
- IR LED Module (working distance up to 15m)
- MicroSD Support (up to 16GB microSD Card)
- Weatherproof (IP66 Outdoor Rated)
- ONVIF Support

ONE: GETTING STARTED

Box Contents
Camera Overview

BOX CONTENTS

Before proceeding, please check that the box contains the items listed here. If any item is missing or has defects, DO NOT install or operate the product and contact your dealer for assistance.

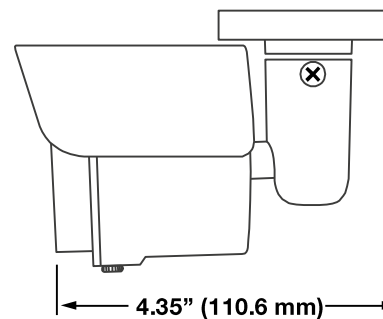
 HD40IR Camera	 Desiccant
 Self-Tapping Screws	 Plastic Screw Anchors
 Quick Start Guide	 Software and Documentation CD

CAMERA OVERVIEW

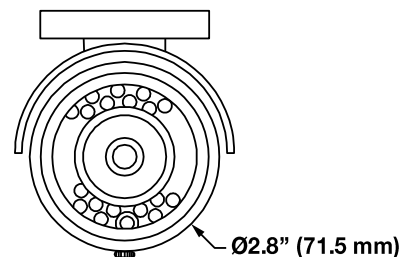
Before installing or connecting the dome camera, please refer to this section and complete preparations for dome setup and all switch settings.

Dimensions

Side



Front



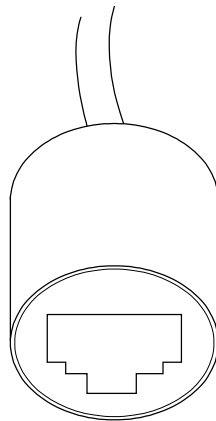
Connections

AvertX HD40IR cameras use Power over Ethernet (PoE). The only connection on the camera is the RJ45 Ethernet dongle located on the rear of the camera. Connect one end of the Ethernet cable to the dongle, and connect the other end to the recorder, or to a PoE switch.

- Protect the network cable connection from water damage by running the cord inside a wall or ceiling, or through conduit.
- If passing the cord through a wall or ceiling, drill a 3/4" hole.
- For outdoor installations, seal any holes in the wall or ceiling with silicone caulk to protect against water intrusion.

AvertX recommends using Category 5 Ethernet cable to connect the camera to your network. For the best transmission quality, the cable length should not exceed 328 feet (100 meters).

Once you have connected the camera, check the status of the network connection by looking at the link indicator and activity indicator LEDs. If the LEDs are not lit check your network connection. The green link LED indicates a network connection and the orange activity LED flashes to indicate network activity.



TWO: CAMERA FINDER

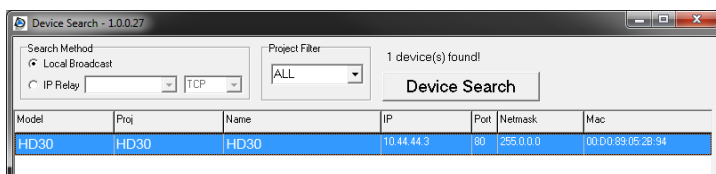
AvertX IP Finder

AVERTX CAMERA FINDER

Use the included Camera Finder software to easily find your network cameras for initial setup. The AvertX Camera Finder software is included on the software CD with all AvertX IP devices. The Camera Finder application is also available to download at avertx.com.

Finding IP Cameras

1. Open the Software CD on the recorder.
2. Click **Software** on the software disc menu.
3. Click **Camera Finder**.
4. Click **Device Search** on the **Device Search** window.



5. If a **Windows Security Alert** window opens, click **Unblock** to allow the IP utility to access your network.
6. Click **Device Search** again to find all connected IP devices.

Tip The default IP address of your IP camera is 192.168.0.250

Note If you cannot connect to the camera you may need to change the camera's IP address to match your network settings.

Accessing the Camera

You can view live video and access the camera configuration by accessing the camera in an internet browser.

1. Right-click the desired network device and select **Browse**.
2. Type the default username and password in the login window to access the video server using your internet browser.

Changing the IP Address

If you are not directly connecting to an AvertX HDIP recorder, you must manually change the IP address. Change the IP address to a number in the same subnet as your existing network or to the recommended network settings for your network.

1. Right-click the desired network device and then click **Network Setup**.
2. Select the **Static IP** option.
3. Enter the new IP Address, Gateway, Netmask, and DNS for camera.

THREE: SETUP AND CONFIGURATION

Installing the Camera
Connecting to the Camera
Viewer Software

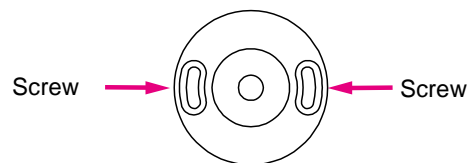
INSTALLING THE CAMERA

The camera can be installed directly onto the wall or ceiling. Be sure that the structure is strong enough to support the camera.

Ceiling and Wall Installation

Bullet cameras are suitable for mounting on either a wall or ceiling.

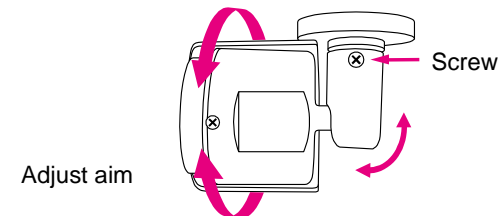
1. Use the included mounting template to pre-drill holes for the mounting screws and, if passing the cable through the ceiling or wall, drill a $\frac{3}{4}$ " hole.
2. Connect the Ethernet cable from ceiling or wall to the dongle on the camera.
 - Protect the network cable connection from water damage by running the cord inside a wall or ceiling, or through conduit
 - For outdoor installations, seal any holes in the wall or ceiling with silicone caulk to protect against water intrusion.
3. Affix the mounting bracket to the ceiling or wall with the three supplied self-tapping screws.



Mounting Bracket Base

4. Use a Phillips screwdriver to loosen the screw on the side of the bracket mount.

5. Adjust the position of your camera.
6. Tighten the screw to secure your camera.

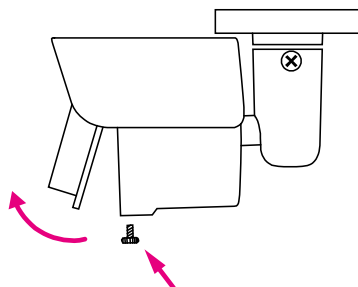


Note HD40IR cameras are equipped with a seal inside the housing to prevent moisture from entering. If you have any concerns about moisture entering the housing or wall through the cable egress, AvertX recommends sealing the opening at the wall and at the base of the camera with silicone caulking.

Removing the Lens Cover

You may need to remove the lens cover from the camera to access the reset button, microSD card, or focus the camera.

- Unfasten the screw on the camera housing and remove the front cover



Installing the Desiccant

To prevent condensation on the glass cover, the HD90IR has a desiccant packet installed inside the housing of the camera. If condensation appears, replace the desiccant packet with the replacement packet included in your camera packaging

1. Unfasten the screw on the camera housing and remove the front cover
2. Remove the desiccant packet from the camera.
3. Carefully tear open the aluminum envelope for the new packet, and remove the desiccant.
4. Remove paper backing from the adhesive strip on the desiccant packet.
5. Place the desiccant firmly in the position indicated here.
6. Reinstall the front cover and fasten the screw

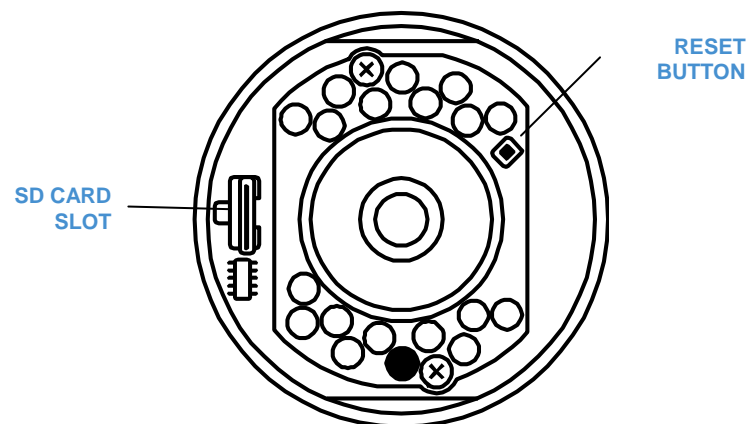
Resetting the Camera

If it is necessary to reset the camera to the factory default settings, hold down the Reset button (see *Camera Overview*) for 30 seconds. This will return all settings, including network setup, to the factory default. The IP address of the camera will return to 192.168.0.250.

MicroSD Card

Your camera includes a microSD card slot (up to 16GB), which can be used for emergency video backup. The microSD card is not included. You must remove the cover of the camera to access the microSD card slot.

Instructions for recording to a microSD card slot can be found at avertx.com/support.



CONNECTING TO THE CAMERA

Connecting In a Web Browser

1. Type the IP address of the camera in a web browser.
or
Use the included Camera Finder software and locate the camera on the IP Finder list, then double-click the camera to open the Viewer software in your web browser.
2. Log in to the camera with the appropriate User Name and Password.

Note The default User name is Admin and the default Password is 1234. The username and password are case sensitive.

Administrator/User Privileges

The Administrator account has the authority to configure the IP camera and authorize users' access to the camera. The User accounts have access to the camera with limited authority.

Default Username and Password

The username and password are case sensitive. It is strongly recommended that the password be changed after the initial setup to prevent unauthorized access.

Username – Admin

Password – 1234

Connecting a Stream

AvertX IP cameras are optimized for use with AvertX HDIP recorders, but you can also connect to your AvertX IP cameras using third party software like VLC media player (<http://www.videolan.org>).

To connect the camera you may need to provide the stream URL. All AvertX IP cameras are capable of delivering two RTSP streams, as well as streaming MJPEG over HTTP. The stream URLs are listed below.

rtsp://<ip address>/mjpeg

rtsp://<ipaddress>/h264

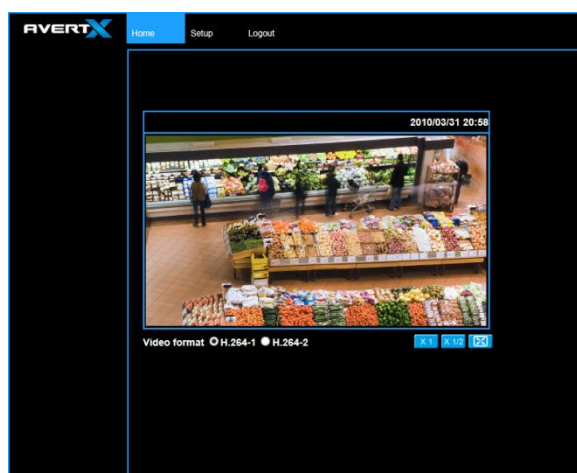
http://<ipaddress>:8008

The MJPEG over HTTP stream is identified by a port number. The default port is 8008; this port can be configured in the camera's **System** page (click **Setup**, and then click **System**).

The screenshot shows the AvertX web interface. The top navigation bar includes 'Home', 'Setup', and 'Logout'. The left sidebar has a menu with 'System', 'Streaming', 'Camera', 'Motion Detection', and 'Software Upgrade'. The main content area is titled 'System' and contains an 'Admin Password' section with fields for 'Admin password' and 'Confirm password', and a 'Save' button. Below this is the 'Network' section, which has two tabs: 'General' and 'Advanced'. The 'General' tab is selected and shows radio buttons for 'Get IP address automatically' (selected) and 'Use fixed IP address'. Below these are input fields for 'IP address' (10.4.6.8), 'Subnet mask' (255.0.0.0), 'Default gateway' (10.0.0.1), 'Primary DNS' (10.0.0.19), and 'Secondary DNS' (10.0.0.55). The 'Advanced' tab is also visible and contains input fields for 'Web Server port' (80), 'RTSP port' (554), 'MJPEG over HTTP port' (8008), and 'HTTPS port' (443). A red arrow points to the 'MJPEG over HTTP port' field.

CAMERA SETTINGS

You can access the camera setup menu using an internet browser on your computer. The camera viewer software will install automatically the first time you connect to the camera. If your internet browser doesn't install the viewer software, check the security settings or ActiveX controls and plug-in settings. If your internet browser asks for permission to install the plugin, you must allow ActiveX or Quicktime to install to continue the installation.



Viewer Tabs

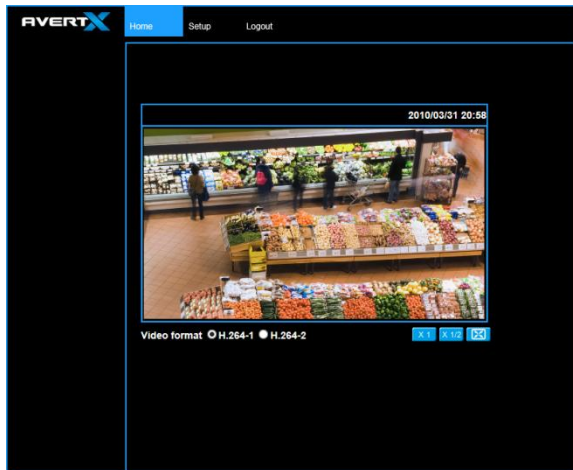
Home – Monitor live video.

Setup – Set the host name, root password, and network related settings, modify the video resolution, adjust the Camera parameters, set Motion Detection options, and view and update the camera software.

Logout – Change user.




Note For advanced management options, access the camera's admin panel by adding "/admin" after the camera's IP address in your browser's address bar.

Home



Select the video stream you want to view, **H.264-1** (stream 1) or **H.264-2** (stream 2).

Note Advanced users can access additional video stream options, including the MJPEG stream, through the admin panel.

	The default when viewing your camera using the web.
	Use this to make the image smaller. This can save bandwidth if necessary.
	This will show your video at full screen on your monitor. To exit full screen mode, double-click the video.

Changing the Language

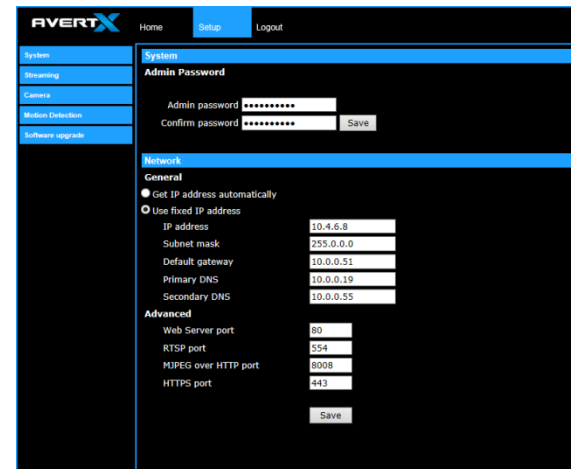
1. Click the **Language** drop down menu
2. Select a language. The browser will refresh, then display the selected language.

Using Digital Zoom Control

In full screen mode, right-click the video image to activate digital zoom and use the scroll wheel to zoom in/out.

Setup

System



Changing the Admin Password

To change the administrator password, type a new password in the Admin Password box, confirm below, and then click Save.

Note The maximum length of the password is 14 characters. The following characters are valid: A-Z, a-z, 0-9, !#\$%&'-.@^_~.

Network

The screenshot shows a network configuration interface. The 'General' tab is active. There are two radio buttons: 'Get IP address automatically' (unselected) and 'Use fixed IP address' (selected). Below the radio buttons are input fields for IP address (10.4.6.8), Subnet mask (255.0.0.0), Default gateway (10.0.0.51), Primary DNS (10.0.0.19), and Secondary DNS (10.0.0.55). Below these is an 'Advanced' section with input fields for Web Server port (80), RTSP port (554), MJPEG over HTTP port (8008), and HTTPS port (443). A 'Save' button is located at the bottom right of the form.

You can choose to use a fixed IP address or a dynamic IP address (assigned by a DHCP server or router) for the camera.

Get IP address automatically (DHCP)

The camera comes preconfigured with a fixed IP address, selecting **Get IP address automatically** requires a router or DHCP server to assign an IP address to the camera.

Note Every network device has a unique Media Access Control (MAC) address that can be used for identification. The MAC address is located on the bottom of each camera, and on the box label (AvertX IP Finder also displays the MAC address for identification). Record your camera's MAC address for identification in the future.

Use fixed IP address

To assign a new static IP address:

1. Select the **Use fixed IP address** option.
2. Type a new IP address in the **IP address** box.
3. Type a new address in the **Default Gateway** box.
4. Click **Save** to confirm the new setting.

When using static IP address to log in to the IP Camera, you can access it either through the AvertX IP Finder software or type the IP address directly in the Address bar of your internet browser.

General

- **IP address** – The IP Address is necessary for network identification.
- **Subnet mask** – Used to determine if the destination is in the same subnet. The default value is 255.255.255.0.
- **Default gateway** – Used to forward frames to destinations in different subnets or for internet access.
- **Primary DNS** – The primary domain name server that translates hostnames into IP addresses. This is usually the gateway or router address.
- **Secondary DNS** – A secondary domain name server that backups the primary DNS.

Advanced

- **Web Server port** – Defines the port that Internet Explorer uses to connect over the web and view video. If this port is changed then the new port must be defined when attempting to web connect (ex: if your camera's IP address is 192.168.0.100 and you change the web port to 8001, then you must type http://192.168.0.100:8001 in your browser).
- **RTSP port** – The default RTSP port is 554; setting range: 1024 ~65535.
- **MJPEG over HTTP port** – The default HTTP Port is 8008; setting range: 1024 ~65535.

Note The MJPEG over HTTP port must not be the same as the web server port.

Streaming

On the Streaming tab, you can configure specific video resolution, video compression mode, and video protocol and audio transmission mode.



Streaming Settings

Your AvertX IP camera can transmit two streams of video at the same time. One stream can be in high definition for recording, and the other can be a lower resolution used for live display. By using dual streams, you can display more cameras on the monitor of your recorder without taxing the CPU.

Resolution – Set the resolution for each stream.

GOP – Set the Group of Pictures (GOP) size for each stream. This setting can affect image quality and bandwidth. Please consult with technical support before changing this setting.

Bit Rate – Set the data transmission speed for your camera. A lower bit rate will result lower image quality but a smaller file size and more bandwidth availability.

Frame Rate – Set the frame rate of each stream. A lower frame rate will result in more bandwidth availability.

Video Rotation

If your camera is installed on a wall or table top the image may appear to be upside down. Rotate the camera video image using the software to get a right-side-up image.

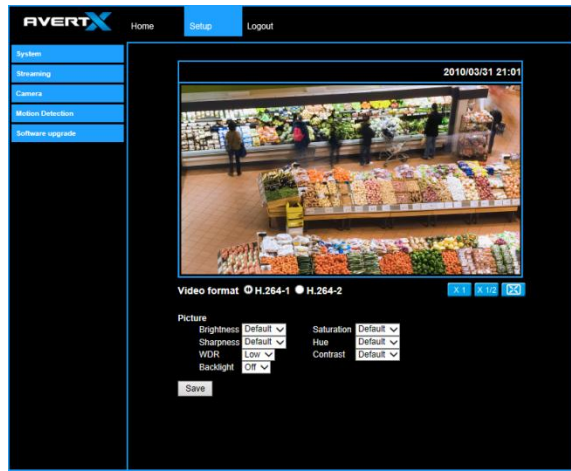
Note You cannot rotate the video image 90° to get a vertical image. Rotating the image 90° will stretch and distort the video image.

To rotate the camera video image:

1. Click **Setup**.
2. Click **Streaming**.
3. From the **Video Rotation** list, select the desired rotation.
 - Normal transmits the image as the camera sees it.
 - Flip transmits the image backwards and upside down.
 - Mirror transmits a mirror image.
 - Rotate 90 degree clockwise/counterclockwise
 - 180 degree transmits the image upside down.




Camera

You can adjust your picture quality on both streams using the Camera section of the Setup tab.



Select the video stream you want to adjust (H.264-1 or H.264-2).

There are three options for viewing video:

	The default when viewing your camera using the web.
	Use this to make the image smaller. This can save bandwidth if necessary.
	This will show your video at full screen on your monitor. To exit full screen mode, double-click the video.

Picture

You can adjust these values as necessary for your installation.

- Brightness
- Sharpness
- Saturation
- Hue
- Contrast

Wide Dynamic Range (WDR)

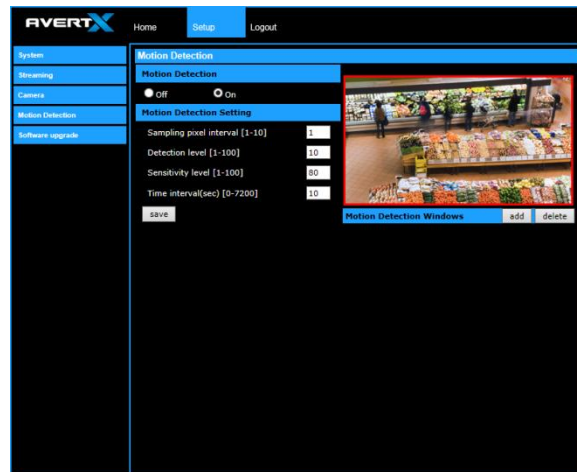
Your camera includes Digital Wide Dynamic Range. If your camera is aimed at an area that includes direct sunlight and dark shade in the same frame, you can lose some of the detail. The WDR function can adjust for these differences to provide detail for both the fully lit area and the shaded area within the frame. Digital WDR uses the Digital Signal Process (DSP) to brighten darker areas of a scene to provide more detail in dark shade.

Backlight

If your camera is aimed at a doorway or window, and you need to see detailed footage of people in front of that doorway, the difference between light and shadow can make the people difficult to recognize. Use the Backlight function to adjust for this problem.

Motion Detection

Motion Detection allows the camera to detect motion and trigger alarms when the motion level in the detected area exceeds the determined sensitivity threshold value.

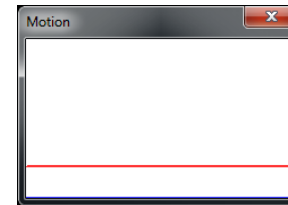


In the Motion Detection page, there is a motion detection window (red box) displayed on the Live View Pane. The Motion Detection window defines the motion detection area. To change the size of the Motion Detection window, drag the edge of the frame to resize.

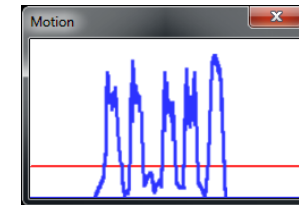
You can add up to 10 motion detection windows.

- Click **add** under the Live View Pane to add a Motion Detection window.
- To delete a Motion Detection window, use the mouse to select the frame and click **delete**.

When motion detection is activated, the Motion pop-up window will open.



When motion is detected, the signals will be displayed on the Motion window as shown below.



Motion Detection

Turn motion detection on or off. The default setting is Off.

Motion Detection Setting

- **Sampling pixel interval [1-10]** – Default value is 10, which means system will take one sampling pixel for every 10 pixels.
- **Detection level [1-100]** – Default detection level is 10. This item sets the detection level for each sampling pixel; the smaller the value, the more sensitive it is.
- **Sensitivity level [1-100]** – The default sensitivity level is 80, which means if 20% or more sampling pixels are detected as changing, the system will detect motion. The bigger the value, the more sensitive it is. As the sensitivity value is increased, the red horizontal line in the motion indication window will be lowered accordingly.
- **Time interval (sec) [0-7200]** – The default interval is 10. The value is the interval between each detected motion event.

Software Upgrade

Use the Software Upgrade page to view the current version of camera firmware, and upgrade the firmware if necessary.

AvertX Home Setup Logout

System
Viewing
Camera
Motion Detection
Software upgrade

Software version

The software version is pa20130812NSA

Upgrade

Follow These Steps To Do The Software Upgrade

Step1:
Upload the binary file
 Browse

Step2:
Select binary file you want to upgrade
userland.img

Step3:
Click the upgrade button to start the upgrade process
Upgrade

Upgrading the Camera Firmware

Note Make sure the new firmware file is available before starting a software upgrade. Do not change the file name, or the system will not be able to update to the new firmware.

1. Download the camera firmware file from avertx.com to a computer and then unzip or extract the file.
2. Access your camera through the web browser.
3. When you have accessed the camera page, click **Setup** at the top of the page.
4. In the setup menu, click the **Software upgrade** tab on the left side of the page.
5. Under **Upgrade** click Browse to locate the firmware file on your computer.
6. Select the file type (ulmage_userland) from the list under **Step 2**.
7. Click **Upgrade**. The system will check the upgrade file, and then upload the file. The upgrade status bar will display on the page.

Logout

Your AvertX camera will automatically log you out when you close your browser window. If you want to log in as a different user, you will need to use the logout tab.

Logging In as a Different User

To log in to your camera as a different user, follow these instructions.

1. Click the **Logout** tab.
2. To log in as a different user, type the appropriate user name and password, and then click **OK**

FOUR: SPECIFICATIONS

CAMERA SPECIFICATIONS

Model	HD40IR Rev B
Resolution	(3 MP) 2048 x 1536, (2MP / 1080p) 1920 x 1080 (1.3 MP) 1280 x 1024, (1MP / 720p) 1280 x 720 (D1) 720 x 480, (CIF) 352 x 240
Video Format	H.264, MJPEG
IP Rating	IP66
Wide Dynamic Range	Digital Wide Dynamic Range
Day / Night	Digital Day/Night
IR LED	18 LEDs
IR Range	50 ft (15 m)
Focal Length	3.6 mm Fixed
FOV	71.8°
Iris Control	F2.0 Fixed
Auto White Balance Range	2700 ~ 8000 K
Auto White Balance Range (ATW)	2225 ~ 9300 K
Auto Gain Control	Yes
Backlight Compensation	Yes
Operating Temperature	18°F ~ 118°F (-8°C ~ 48°C)
Heater	No
Power Consumption	3.8W Max
Input Voltage	PoE Only
Weight	0.7 lbs (317 g)
Dimensions	L: 4.9" (124.5 mm) x H: 3.4" (86.36 mm) x Ø2.8" (71.5 mm)

www.avertx.com

1-855-2AVERTX

© 2014 AvertX

All rights reserved. No part of this publication may be reproduced by any means without written permission from AvertX. The information in this publication is believed to be accurate in all respects. However, AvertX cannot assume responsibility for any consequences resulting from the use thereof. The information contained herein is subject to change without notice. Revisions or new editions to this publication may be issued to incorporate such changes.